



JAN
2011

PERSPECTIVES

UTAH CHAPTER OF THE AMERICAN SOCIETY OF LANDSCAPE ARCHITECTS

MESSAGE FROM THE PRESIDENT

by Cory Whiting, President, Utah ASLA



[Sarah Williams Goldhagen](#), architecture critic for [The New Republic](#), argues that America's public realm is best served by physical urban spaces that can enable "non-structured and non-goal-orientated" interactions among many kinds of people. The best places for these types of interactions? Great urban parks. She covers the role parks have played in enabling democracy, traces the impact of Frederick Law Olmsted's pioneering urban parks, explores a few contemporary parks that fit the "great urban

park" name, and outlines the rise of landscape urbanism, a theory that may be encouraging designers to better serve the public realm. (Read the full article at <http://dirt.asla.org/2010/10/22/goldhagen-democracies-need-physical-spaces-in-cities/> 10/22/2010 by www.dirt.asla.org)

What Godlhagen discusses about landscape urbanism is very important to all landscape architects and especially to us here in Utah. Although Utah was founded long ago, there are many new cities and towns developing in Utah. As Landscape Architects we not only have a great opportunity to shape the future of Utah's green spaces but we have an obligation and stewardship to see these spaces are designed properly. In today's economic situation, it may be tempting to simply propose the bare minimum landscape standards for these new park areas in order to "win a project" but I think we need to look long term at the consequences, good or bad, of how we design public spaces.

It's been said many times "If you fail to plan, plan to fail". I would take it one step further and say we need to apply correct principles of planning that will not just serve our pocket book today but enable great spaces to be built that will unify and connect our new towns and cities. Obviously one of our biggest challenges with Cities and Developers is budget. Budget, most oftentimes drives a project and although we as Landscape Architects wish it wasn't that way there are things we can do to still add value and longevity to a project without being over budget. It takes creative thinking, teamwork and discipline and not a "hurry up and let's get this done so we can make a profit" attitude. I'm sure many landscape architects take pride in their work but I have seen landscape architecture and planning projects that are really lacking.

I would like to encourage all of us as design professionals to evaluate how we design and what our priorities are. Yes, we all have to make a buck, as that is what makes the world go around, but let us be wise and propose designs that have integrity, longevity and a real sense of place that all walks of life can enjoy.

INSIDE THIS ISSUE:

Presidents Message	1
EXCOM Minutes	3
Student Mentor	4
Member Spotlight	5
TCLF's Nominations	9
Community Garden	10
Legislation Watch	12
Buyer's Guide	14

UTAH ASLA
WWW.ASLAUTAH.ORG
P.O. BOX 511125
SALT LAKE CITY, UTAH 84151

EXECUTIVE COMMITTEE

President

CORY WHITING
In-Site Design Group
cwhiting@in-sitedesigngroup.com

Past President

JEREMY FILLMORE
Northland Design Group
jfillmore@northland-design.com

President-Elect

CORY SHUPE
Blu Line Designs
cshupe@blulinedesigns.com

Executive Director

JOLYNN ATKINSON
801.833.2944
executivedirector@aslautah.org

Trustee

MARK VLASIC
Landmark Design
markv@ldi-ut.com

VP Education & Licensure

RICHARD GILBERT
ArcSitio Design
rgilbert@arcsitiodesign.com

Member-at-Large Education & Licensure

GREG BOUDRERO
MGB+A
gregb@grassligroup.com

VP Membership & Member Services

JESSE BELL
MGB+A
jesseb@grassligroup.com

Member-at-Large Membership & Member Services

RUSS HOLLEY
City of Logan
rholley@loganutah.org

Secretary

ROBERT DONIGAN
Logan Simpson Design Inc
rdonigan@lsdut.com

Treasurer

GEOFF ELLIS
gellis@stanfordalumni.org

HALS Liason

LADD SCHIESS
laddbschiess@yahoo.com



UTAH ASLA
2011 ANNUAL MEETING
PAST PRESENT FUTURE

Upcoming Events:

» **SAVE THE DATE FOR THE UTAH ASLA ANNUAL MEETING "PAST, PRESENT, FUTURE" MARCH 25TH @ UTAH STATE UNIVERSITY!!!!**

» **CALL FOR ENTRIES FOR THE 2011 UASLA AWARDS PROGRAM. DEADLINE MARCH 1, 2011 BY 5:00 P.M. (ATTACHED)**

MONTHLY SOCIAL

DATE: FEBRUARY 16, 2011
TIME: 11:30 - 1:00 PM

LOCATION: DAYBREAK COMMUNITY CENTER
4544 HARVEST CREEK WAY SOUTH JORDAN, UT

DESCRIPTION: ADHERE TO GUIDELINES, GUIDE CUSTOMER THROUGH BUILDING MATERIAL, ECT.
(FLYER ATTACHED)



RSVP TO JOLYNN TODAY!
EXECUTIVEDIRECTOR@ASLAUTAH.ORG

EXCOM JANUARY MEETING MINUTES

Calendar of Events/Member Services:

No January Social. February Social is sponsored by CFC Fencing/Chad Wright. March Social is the annual meeting.

Conclusions / Action Items: Continued discussion regarding having interesting/educational presentations at our monthly socials in addition to sponsor/vendor presentation. GSBS not to present at February social. Jesse to find someone else. Justin Hamula was scheduled to sponsor March's meeting but due to the scheduled annual meeting, JoLynn will see if he can re-schedule for April. There will not be a July social. We have sponsors for socials through June.

President:

Interactive Site and Utah Landscape Architecture Book, Executive Director – Vote to retain JoLynn unanimous (Cory W., Cory S., Jeremy, Greg, Jesse, Russ, Mark, and Geoff) YEA!

Conclusions / Action Items: Kris Kvarfordt to give an update on the progress of the steering committee for the interactive site and Utah Landscape Architecture Book.

Past President:

Annual Meeting: "Utah ASLA – Past, Present & Future", March 25th?, Awards, Judging (Russ Holley) Estimated attendance? Banquet sponsorship and recognition

Conclusions / Action Items: Proceeding with March 25th date. Kent Concert Hall reserved for our use. Vendor set up will be on March 24th. Contact University Inn regarding room reservations for those dates – primarily the 24th. It was decided to keep the catering on campus if possible to support the university. The Tippits Art Gallery is available if we wanted to set food up in there. Educational sessions could be set up on the stage rather than in the huge auditorium. Draft schedule was reviewed. General direction was approved. Discussion was had regarding getting a panel of retired LAs to participate. It would be nice to have a representative from National participate in a session and be the Keynote speaker at the banquet. Idaho chapter discussed as first choice to judge submittals for awards. Colorado was second choice. Russ to follow up on this. Jesse to assist with MGB+A as drop location for submittals. Russ to create an awards process memo describing this process for future years.

50-60 people are the estimated attendance at the conference.

Education & Licensure:

Continuing Education (Jay Nielson)

Conclusions / Action Items: After long discussion it was voted to proceed with Jay heading push for state licensure legislation. Jay to follow up with specific assignments. This push is very time sensitive and needs to be acted on if to be successful. Rob Donigan motioned to have Jay continue. Cory Shupe seconded. Jesse, Cory S., Rob, Richard, Geoff, Mark, and Russ voted aye. JoLynn to send out legislation information so everyone can be informed on what we are working towards. This may also be available on the chapter's website. Getting continuing education credit at our annual meeting and for our monthly socials was discussed. JoLynn to follow up with Alicia to see what the process and cost to get these sessions accredited is.

Trustee:

Conclusions / Action Items: Mark to participate in a "How to Design Community Gardens" presentation for Wasatch Community Garden sometime later in January. Invites any interested members to participate. This could also result in multiple projects that we could work on in April as part of National LA Month activities. Mark to follow up with additional information. Mark to provide article regarding this topic in January Newsletter.

Treasurer:

Conclusions / Action Items: Chapter has a \$1,600 penalty from the IRS due to late filing by our accountant. Chapter to immediately pay the IRS, but JoLynn to create an invoice for this penalty and send to accountant requesting payment.

Executive Director:

Newsletter – Member Spotlight, Monthly Socials, March Sponsorship – Move to April? National Meeting Attendance, Buyer's Guide

Conclusions / Action Items: JoLynn to provide monthly member spotlight in newsletter. Jay Nielson for January. Excom to give JoLynn all final vendor contacts to follow up on by January 21st. Excom to follow up on assignments that JoLynn sent out. If chapter to do buyer's guide will want to print by the annual conference. JoLynn to try and get original

STUDENT MENTOR PROGRAM

Since three members of Landmark Design are each mentoring a student, we decided to start the process with a joint "kickoff" meeting at our office in Salt Lake City. This approach was taken in part to streamline the mentoring process and to provide an opportunity for ride-sharing from Logan to SLC, but it also allowed the students to interact with three professionals.

The kickoff began with Amanda Dunlap, Chris Worthington and Justin Wilson attending a typical office meeting. This allowed them to meet the rest of our staff and get a feel for the types of projects we are currently working on. As we went through the projects, we took time to talk a little about them so the students could get a better understanding. They then observed a promotional, pre-proposal meeting with a team of sub-consultants as we discussed and strategized how to approach our proposal and how to be competitive and original in our approach. We felt this gave them a first-hand look at what it takes to

assemble a team of professionals and how a multi-disciplinary team comes together to pursue a project. The afternoon concluded with a visit to a nearby landscape installation designed by Landmark Design, followed by a few minutes with their assigned mentor for some one-on-one input on projects, resumes, and general advice.

Overall, we feel that the joint meeting was a good way to start the process, and we hope that the students had a positive experience. Since the kickoff meeting we have continued our joint efforts by reviewing the professional resumes and portfolios of Justin and Amanda, and arranging for the students to sit in on one of the firm's project interviews. We look forward to additional shared mentoring experiences in the coming weeks as opportunities arise.



landscapeforms®

Vivian Kovacs Denver
800.430.6206 x1323
viviank@landscapeforms.com
www.landscapeforms.com

ASLA MEMBER SPOTLIGHT: JAY NIELSON

Editor's Note: This is an edited version of a full article published in the Logan Herald Journal Dec. 2, 2010 written by John Funk. Parts of this article by JoLynn Atkinson with an emphasis on ASLA topics.

Obvious Questions asked of someone retiring from public service:

1. What caused you to choose planning as a profession?

Before I started college I was introduced to Landscape Architecture and Planning by my brother who worked for Salt Lake County Planning in the 1950s. He was a very positive influence on me and I spent part of my summers living with him and helping him draw maps from aerial photographs. When I started college, in the 1960s, I saw many students and professors challenging everything about our way of life, the environment, and government. Many were quick to point out the problems that we had, but few were proposing any thoughtful solutions. I saw in the field of planning and landscape architecture a very positive approach to bring better solutions to our communities, our nation, and the environment that we live in. In short, I saw how it could be a part of the solution, rather than a part of the problem. I began my career in the Department of Landscape Architecture and Environmental Planning at Utah State University. I have enjoyed great fulfillment in my work by improving my world and the world of others through the many projects of my 40 year career.

2. Why are you retiring?

I am almost 66 years old. It is that time in my life when I need to spend more time with my wife, Judy, who retired from USU last year. We have many personal interests to pursue. It is also a good time to be leaving the City because many of the goals that I established for myself have now been fulfilled. I also believe that the City will benefit by a new generation of thinking and energy with a new department head. "Old buzzards need to fly away while they still have the means".

4. What have you accomplished?

I have accomplished very little on my own. Good things happen when people join together in a common community purpose. Together, with the great people that I have worked with, we have

made many improvements to the city and have caused some needed changes. Those that have worked most closely with me are Mayors Thompson and Watts, City Attorney Kymber Housely, the Municipal Council, the Planning Commission, the Historic Preservation Committee, my dedicated staff, the other city department heads, city employees, the Logan Downtown Alliance, business leaders, and most significantly the citizens of this great city. If there is one thing that I have accomplished, on my own, it would be that I have given significant leadership and direction to my department and to the City of Logan in my role as the City Planner. City Planners cannot just occupy a position. They must do and they must make a difference. I believe I have done both for the betterment of this city. The collective major accomplishments of the City during my tenure are:

- o Prepared a new General Plan – A Fifty Year Vision for the Future. This is the most comprehensive, far reaching, and forward looking plan this city has ever prepared.
- o Organized many citizens and merchants to produce "A vision for the Future of Downtown Logan"
- o Began a public document archiving system that allows staff to retrieve and preserve precious public records. We have scanned tens of thousands of documents in the last 4 years in a massive effort to make all public documents more accessible to the public.
- o Updated the Logan Affordable Housing Plan and promoted affordable housing for families desiring to live in Logan. In the last 5 years more than 100 homes have been saved from conversion to rental by helping new families to continue the tradition of single family home ownership in older neighborhoods of Logan.
- o Maintained the historic qualities of our city. Supported the Historic Preservation Committee in its stewardship of Historic Logan. The Historic Preservation Guidelines were updated. Now in the process of preparing a survey of historically significant buildings and sites throughout the city.
- o Guided the development of the WalMart site to a whole new standard for development in the city which cannot be equaled in this state.
- o And numerous other accomplishments as detailed in the interview.

5. Have You made mistakes and what are they?

Of Course I have. During the General Plan workshops about, 7 or 8 years ago, I forgot for a brief time that the citizens still rule. I found myself at odds with concerns of some residents of older established neighborhoods. Once the light came back on again, I concluded that they were right and I made an appropriate course correction. The experience helped to solidify the staff's commitment to long term neighborhood improvement. I do have several development projects that I have some regrets about. These are not oversights or mistakes as much as they are simply a regret that we did not push harder for a better solution. Most of my regrets I will not tell you about. They are my secret and I will have to live with them. One in particular that I will tell you about is the townhouse project on the curve at golf course road (about 350 west). I will always regret that we did not require the fronts of the houses facing the street with the backyards in the rear with the parking. The community would have enjoyed looking at the front entrances better than grilling and back patios close to the street. The residents would have had greater privacy behind the units. The great views of the golf course could have still been enjoyed from the living room and bedrooms above. I will always regret not making that project better for everyone. I will never drive by that project without those regrets.



“I am not confident that I have earned the right to council anyone. Because I was asked, I will pass along the same advice that I give myself;

- » Believe in yourself as an expert.
- » Mentor those with a thirst for what you do.
- » Lead, enthusiastically, in the principles of Landscape Architecture
- » Ensure that today’s project improves tomorrow. Our world is made one project at a time. Every project makes a difference.
- » Stand up to bullies.” Jay Nielson

7. Landlord Licensing and grandfathering have been controversial issues in the recent past. How do you feel about the criticism leveled at you and your department?

Concern about both of these issues began growing about 15 years ago from the grass roots of our older, established neighborhoods. Landlord Licensing will

ultimately prove to be good for landlords, tenants, and adjacent neighbors. It will take several years for this to be manifest. Grandfathering has been, by far, the most difficult task that my staff and I have encountered. However, It is difficult but necessary work. It involves complex research, inspections, and evaluation of public comments, records, and owner frustrations. We do not take any of this work lightly.

A lot of our available time is consumed by grandfathering. I have remained personally involved in every grandfathering decision, because I have felt the awesome responsibility of the outcome on the owners. I will not miss this particular work. At times it has been literally gut wrenching.

8. What have been the most difficult decisions you have made as director?

Some grandfathering decisions and having to terminal good and capable employees because of their mistakes.

ASLA Section

1. What advice do you have for landscape architects?

Many years ago, I had an experience in Salt Lake City that helped to shape my career as a Landscape Architect. It was a large gathering of landscape architects from around the state.

As I recall, the meeting room was at half capacity with 75 to 100 landscape architects. One of the speakers

stood before the group and invited everyone to a pity party for landscape architects. The party began with a rousing round of complaints about how landscape architects are picked-on and bullied by architects and engineers. The whining continued to confirm our lowly position in the design profession. I must admit that in moments of weakness I had similar discouraging thoughts in the scramble to survive as

Rain Bird® ESP-LXM 12-Station Module



Now expand the ESP-LX Modular Controller up to 48 stations. Your irrigation challenges come in all shapes and sizes. That's why the new ESP-LXM 12-Station Module delivers the flexibility you need to control sites ranging from large residential all the way to large commercial. Just snap the module into place and expand to up to 48 stations in 4-, 8- or 12-station increments. With a single ESP-LX Modular Controller, you can now tackle almost any high-end job.

No-nonsense installation. Modular, plug-and-play design makes adding stations a snap. Install 4-, 8- or 12-station modules in any order within the cabinet.

Dynamic Station Numbering orders stations in the correct sequence, preventing unwanted numbering gaps.

Extra Simple Programming. Get up and running faster thanks to the proven ESP controller interface, featuring easy-to-follow prompts and a large, easy-to-read display.

Easy customization. Whether the job is large or small, only pay for the number of stations you need with your choice of 4-, 8- and now 12-station modules.



To learn more about the new ESP-LXM 12-Station Module, contact:

Kirk A. Miller, LLA, ASLA

Area Specification Manager • Rain Bird Corporation
tel 801.891.8752 • fax 626.633.4570 • kmiller@rainbird.com

D40002



CONTINUED FROM PAGE 6

a young landscape architect. In the excruciating minutes before this pathetic display concluded, I promised myself that I would never think that way again and I never have.

I am not confident that I have earned the right to council anyone. Because I was asked, I will pass along the same advice that I give myself;

1. Believe in yourself as an expert. 2. Mentor those with a thirst for what you do. 3. Lead, enthusiastically, in the principles of Landscape Architecture 4. Ensure that today's project improves tomorrow. Our world is made one project at a time. Every project makes a difference. 5. Stand up to bullies.

2. What are some of the changes that you have seen over the years?

I have a slide rule on my desk at all times. Not because I use it, rather, I am amused by the puzzled look of those that have no idea what a slide rule is, let alone how to use it. I am often amazed at how technology has changed our profession. It seems that nothing is done the old way. Just the other day, I was telling someone about the difficulties of making corrections with a typewriter and the intense labor to get a final report ready for the printer. A 200 page document could take weeks of typing, correcting, retyping, and layout. In my time, workstations replaced drafting tables, electronic layers replaced overlay drafting systems, word processors replaced typewriters and correction tape, digital polygon area calculators replaced planimeters (a perplexion to some of you), the internet replaced reference books, spreadsheets replaced accounting books, Quickbooks replaced billing books and account ledgers, satellite irrigation controls replaced manual controls, global positioning and total stations replaced transits and plane tables (this is likely another unknown), Power point replaced presentation boards, and websites replaced brochures, and colorful highly professional proposals replaced typed and photocopied submissions. By the way, what is a carousel projector or what is a kodachrome slide? How about a blue print machine? Are "burnt sieana, light ivy, brick beige, and warm grey #4" colors in a Creative Suite color palette? I think most of us have enjoyed these changes. The reduction in tedium has been good. We can think more, draw quicker, and write better. My only regret about these changes is the loss of highly developed hand drawing and hand printing skills that were unique to every landscape architect. I have certainly lost most of mine.

3. What were some of your favorite projects?

I must take this space to recognize the one person

who has been the greatest influence of my professional life, Dave Bell. Dave hired me upon graduation to join him at Land Design Research, in Columbia, MD.. It has always seemed that am trying to catch up to him. In terms of brain power, skill, and wisdom, he was always been multiple steps in front of me. We worked, side-by-side, on many amazing projects over a span of 30 years.

My partnership with Dave, Jan Striefel and Brad Wellington at Land Design, Inc, was indeed a highlight to me - a twelve year experience that I look back on with fondness. We accomplished much together. Some of today's leaders in Landscape Architecture, in this state and beyond, worked with us during those good years. Although the demise of LDI was tragic for the four of us, I have no regrets for the great times, projects, and experiences that we shared.

Most Meaningful Projects;

- Water front projects in Hong Kong, Singapore, Cancun Mexico, and along the U.S Atlantic and Gulf coasts.
- Salt Lake International Center
- Triad Center
- Sandy City Center Master Plan
- Utah State University Master Plan and numerous improvements to campus.
- Logan General Plan
- Land Development Code- a new 2010 place-based code for Logan
- Open space conservation strategies and ordinances for multiple communities

4. Where do you see the profession going in the future?

I see big opportunities for landscape architects. I believe the populations of our county and the world will become increasingly dependent on landscape architects to design better communities, solve environmental problems, and to give leadership towards sustainable life. Landscape Architects are, indeed, the "glue guys". We can see the bigger picture and are uniquely capable to glue together disparate but complimentary pieces of the design puzzle.

Other countries look, almost exclusively, to U.S. landscape architects and other design professionals for planning and design guidance. Landscape architects will increasingly become a critical resource for immerging countries anxious to expand their physical and cultural infrastructure. For now, the hot bed of development activity is focused on the Middle East and China. Great opportunities exist for those who are willing to relocate or endure extensive travel. Many of us have friends in the Middle and Far East where U.S. landscape architects and planners are not only in high demand but almost revered.

None of us should shrink from our duty to carry the torch of landscape architecture toward a better world. It has been a good ride.



TCLF'S LANDSLIDE NOMINATIONS 2011

For nearly a decade, Landslide has focused on different thematic groupings of threatened landscapes.

In 2011, the Landslide theme: *The Landscape I Love* focuses both on at-risk sites and the passionate, visionary individuals working tirelessly and often unheralded to raise awareness about these places. The landscapes that surround us everyday shape our communities and the people living in them, and their uniqueness can inspire acts of great devotion: rescuing a garden; protecting a viewshed at a historic Civil War battlefield or keeping land in agricultural production despite looming development.

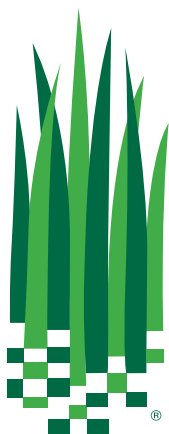
The *Landscape I Love* celebrates the ongoing efforts of these individuals and the landscapes for which they advocate, and complements TCLF's ongoing *It Takes One: Stewardship Stories*. The selected sites will be announced at www.tclf.org this fall.

Help us bring attention to these individuals and the sites they love—nominate an at-risk cultural landscape and the person working to preserve, interpret, and protect it to TCLF's 2011 Landslide: *The Landscape I Love*.

Submit a Nomination
>Deadline is March 31!

This year will be greener.

It's a new year. And the scientists at BioGrass will continue to develop seed-mixes that produce beautiful sod which uses less and less water.



BIOGRASS[®]
S O D F A R M S

801 • 562 • 9090

800 • 795 • 3236

Fax 801 • 566 • 3403

9980 South State

P.O. Box #708280

Sandy

Utah

84070

The science of great sod.[®]

www.biograss.net



CANYON RIM COMMUNITY GARDEN - A SIMPLE REQUEST FOR VOLUNTEER DESIGN SERVICES HAS BIG RESULTS

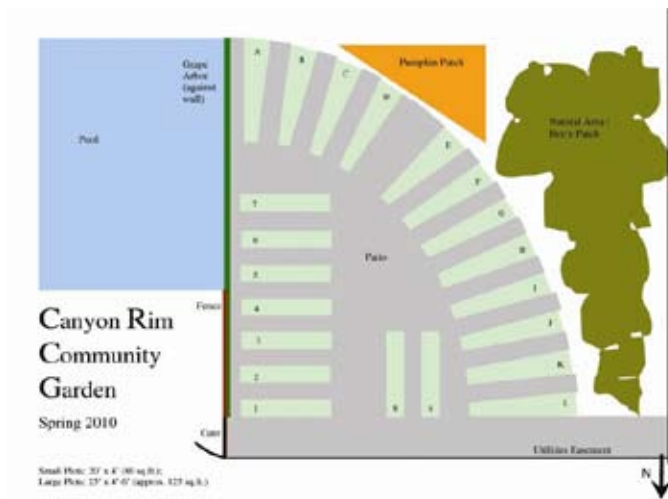
BY MARK VLASIC, UTAH ASLA TRUSTEE

In late Spring 2010 I was approached by my friend Allison Rowland to help organize a Saturday charette to design a community garden. Allison lives in the Canyon Rim neighborhood of Salt Lake County, just south of I-80 as it enters Parley's Canyon. A relatively recent resident of the neighborhood, Allison noticed the unkempt vacant lot behind her property but initially thought little of it. As time passed, she began to wonder who owned the property and how it could be put to better use. She discovered that the site was owned by a local church. Beginning in Fall 2009 she got a small group of interested people

composed of nearby residents and others interested in gardening, and approached the owner with the idea of converting the space into a garden. To her surprise they agreed. I was invited to attend one of the first organizational meetings. About ten people showed up, and together we took a look at the site. Allison, I'm sure heard the audible gasp as we took in the poor condition of the site – it had tell-tale signs of being used as an informal dump over the years, highlighted by an expansive heap of dirt, rocks and construction waste in one corner. Skepticism took over as I noticed the soil, which was strewn with rocks and stones of all sizes. We soon discovered that a canal was piped under the site, but the water was not available for our use. Not a great beginning, to be honest.

We reconvened to discuss design options, and quickly settled on a radial design. Everyone like the fact it maintained the existing scrap piles, avoiding backbreaking and expensive removal work. It was decided to plant the hills with blackberries, brambles and pumpkins.

Allison began working in earnest on the 100 square foot garden in February 2010. She received insurance coverage in May, and began clean-up, plot layout, etc. immediately thereafter, with participation by scout troops, neighbors, and others. Planting started around May 15, with help from Wasatch Community

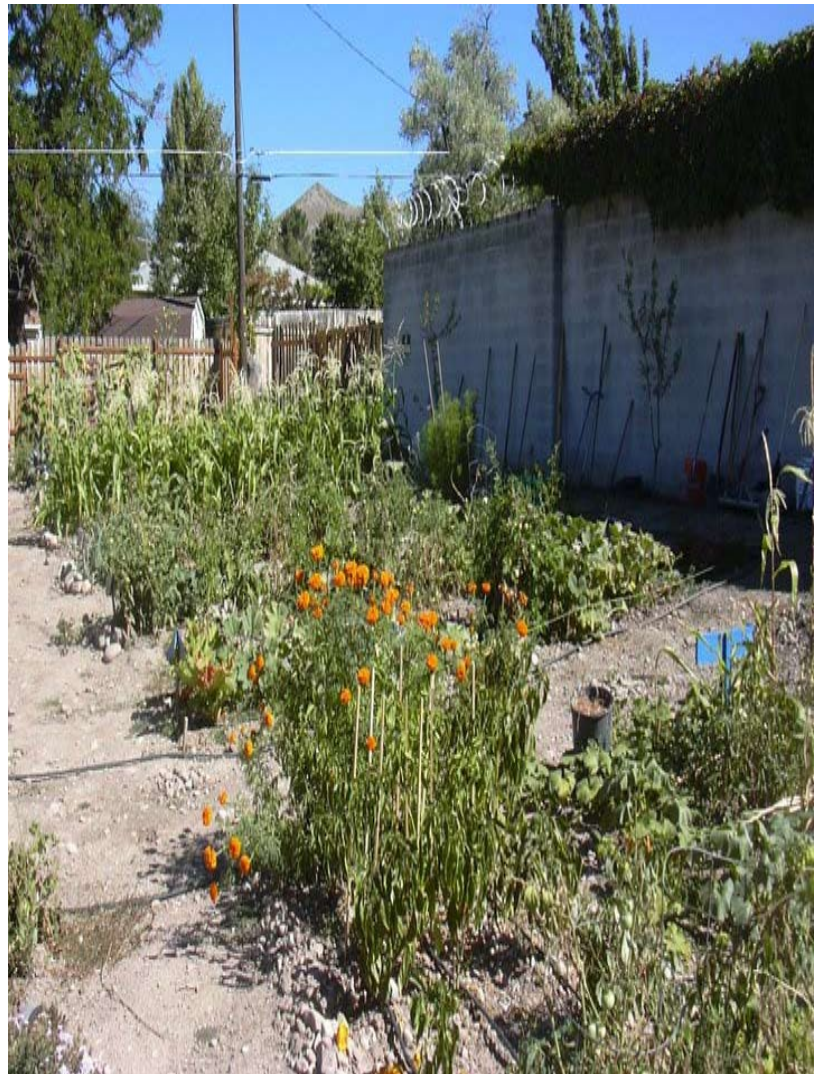




Gardens (which provided seedling plants – the leftovers from their annual plant sale.)

A fun fact is that the garden was established with virtually no money - almost everything was donated or done with volunteer labor. Normally gardeners pay \$25 for a small plot or \$40 for a large plot, which includes water. Gardeners include people from Bhutan, Burma, Mexico and East Millcreek. The first two groups are refugees who live nearby. Refugee costs for participation were covered by either donations to "adopt refugee gardeners" or through a grant by Salt Lake County Refugee Services to place refugees in community gardens around the valley. Those payments didn't cover the first-year's costs completely, but it is hoped the deficit will be made up over the next several years.

If you are interested to lend your skills as a landscape architect, there are plenty of similar opportunities. According to Susan Finlayson of Wasatch Community Gardens, they would appreciate similar "charette" input for designing other fledglings gardens, one of which will be located in downtown Salt Lake City at the Artspace Rubber Company. Please feel free to call me at 801-474-3300 if you are interested,



LEGISLATION WATCH

BY JAY NIELSON

House Bill 196 passed the first step toward Continuing Education Credits for Utah Landscape Architects. The vote was 10 for and 1 against. Those present at the hearing were Jeremy Filmore, Mark Vlasic, Troy Herold, Greg Graves, Jesse Bell, Richard Gilbert, Geoff Ellis, Jay Nielson, and Greg Boudero. The Committee has made a favorable recommendation to the House of Representatives. From here the bill will go to the full house for a vote. We are about 25% of the way to getting the bill passed. We still need your support influencing the two elected officials in both the House and Senate who live in your district. Your contact will make a difference. Susan Crook contacted Representative Ipson from Washington County. Ipson was quick to make the initial motion to advance our bill. Thanks Susan. There are some talking points in the attached article that you can use in your email, phone call, or other contact.

Sites to help you determine your Legislators:

<http://le.utah.gov/GIS/findDistrict.jsp>

<http://www.utahsenate.org/asp/roster.aspx>

<http://www.utah.gov/house/representatives.html>

TALKING POINTS

These talking points are the notes and text of a presentation made to the Business and labor committee. Please modify as you feel they will best make your points.

Introduction

- Introduce yourself and let them know that you are a voter in their district.
- I represent 400 Utah licensed landscape architects and 130 Utah members of the American Society of Landscape Architects, many of which, are seeking to become licensed landscape architects.
- A couple of years ago the body of our membership was surveyed about Continuing Education requirements. A super majority wanted CE requirements. Last month, the elected leadership of our Chapter reaffirm its desire for this legislation.

I hope to make a compelling connection between the public good and this enabling legislation to require landscape architects to stay current in their field of expertise.

- What Landscape Architects do:
 - Plan and Design
 - Cities,
 - Downtowns,
 - Streets,
 - Housing developments,
 - Planned communities,
 - Recreation Facilities,
 - Parks,
 - open space,
 - trail systems
 - We have all been educated and we practice wise principles of conserving our natural and cultural resources. We care about using the land in this state wisely. We promote real actions that make Utah a more sustainable living environment.
 - Landscape Architects were at the core of projects like:
 - The impressive City Creek
 - The Capitol Grounds
 - Temple Square/Conference Center
 - Every Church Site
 - Schools and campuses
 - Salt Lake International Center
 - DayBreak
 - 2002 Olympic Venues
 - Ski resorts
 - Golf Courses
 - Airports
 - Our Highways
 - Federal, State, and Local Camps and Recreation Facilities
 - Many of our residential properties.

ARTICLE CONTINUED FROM PAGE 12

□ Planning Cities, like Salt Lake City, Provo, Ogden, Logan, St. George and likely the city you live in.

- When any of these projects (just mentioned) are designed, developed, and constructed a team of professionals is required. Typically any project team consists of an architect, a landscape architect, and an engineer. The leadership of the project design team varies based on it's nature. The success of almost any development project will employ the expertise of this triad of design professionals. All three of these professions require qualification based licensing by the State of Utah. Architects and engineers have continuing education requirements for licensing. Landscape Architects do not. This is not about keeping up with the architects and engineers. To a large degree, it is about consistency in the requirements for self improvement which benefits the public.

- The Licensing act for landscape architects, engineers, and architects focuses on Health, Safety, and Welfare provisions.

- The licensing requirements for landscape architects bring about some very specific benefits to the Utah public.

- o We Plan and design cities and developments that avoid unstable slopes and soil conditions, avoid geologic hazards, and guard against flooding. (Safety & health benefit)

- o We Design and mitigate wild land fire potential adjacent to urban development (Health and Safety benefit)

- o We Design safe roads, trails, pedestrian ways and bikeways that avoid congestion and safety conflicts, and provide efficient movement of people. (safety & health & welfare benefit)

- o We Design Sites for safety and accessibility for persons that are mobility challenged. (Health and Safety benefit)

- o Conserving critical natural, cultural, and historical resources (Welfare benefit)

- o Conserving energy, water, and building materials (welfare benefit)

- o We Plan and design a vast multitude of recreational projects for the enjoyment, recreation and well being of the public (Welfare and health benefit)

- If these benefits to the public are important. And they are. Then it is important to obtain new knowledge and proficiencies that will benefit the

public. Continuing education training requirements will give greater assurance that landscape architects remain current in their field of expertise.

- Technology is changing rapidly in site design, construction material, and accessibility. Federally mandated stormwater requirements are setting new standards of safe handling of runoff. Landscape architects must be planning and designing projects using the most current practices available.

- Our request toward our own self-improvement requires no commitment of public funds. Continuing education requirements will be funded by ourselves.

- The CE requirements, as proposed are simple, non-invasive, and affordable for landscape architects.

We seek your vote and support of this bill which will enable us to work with the Division of Occupational and Professional Licensing to create rules for Continuing Education of Landscape Architects that will serve to increase the proficiency of landscape architects and more importantly promote greater health, safety, and welfare for the good folks of the state of Utah.



ASLA Utah Sponsor Index & Buyers Guide

Furniture

- | | | | |
|----------------------|---------------|---------------------|--|
| » Landscape Forms | Vivian Kovacs | 800-430-6206 x 1323 | www.landscapeforms.com |
| » Sonntag Recreation | Chris Sonntag | 800 748-5450 | www.sonntagrec.com |

Irrigation Services

- | | | | |
|---------------------|---------------|--------------|--|
| » Rain Bird | Kirk Miller | 801-891-8752 | www.rainbird.com |
| » Hunter Industries | Justin Hamula | 801-231-9504 | www.hunterindustries.com |

Park and Recreation

- | | | | |
|----------------------|---------------|--------------|--|
| » Sonntag Recreation | Chris Sonntag | 800 748-5450 | www.sonntagrec.com |
|----------------------|---------------|--------------|--|

Sod, Turf and Surfaces

- | | | | |
|----------------------|---------------|--------------|--|
| » Biograss Sod Farms | Peter Bell | 801-562-9090 | www.biograss.net |
| » Sonntag Recreation | Chris Sonntag | 800 748-5450 | www.sonntagrec.com |

If you would like to be included in this guide, please contact JoLynn Atkinson at 801 833 2944.